

**Unica Campaign and IBM SPSS Modeler
Advantage Enterprise Marketing
Management Edition Integration Guide**



Contents

- Chapter 1. Unica Campaign and IBM SPSSMA Integration Guide..... 1**
- Overview of the integration..... 1
 - How modeling and scoring work in the integrated environment.....2
- Configuring the integration..... 5
 - Single sign-on between Unica and IBM SPSS Modeler Advantage Enterprise Marketing Management Edition.....9
 - Setting up single sign-on between Unica and IBM SPSS Modeler Advantage Enterprise Marketing Management Edition..... 13
 - Configuring properties..... 17
 - Disabling or re-enabling integration..... 21
- Building and scoring models.....21
 - About single sign-on.....25
 - Model types.....27
 - Automatic matching of fields..... 30
 - Prerequisites for building and scoring models..... 33
 - Converting an existing Unica Campaign flowchart from PredictiveInsight..... 35
 - Selecting modeling stream versions other than LATEST..... 36
 - The SPSS® Model process.....36
 - The SPSS® Score process..... 44
 - Automating the building and scoring of models.....48
 - Troubleshooting model and score processes..... 50
 - Example of a campaign that uses SPSS® Model and SPSS® Score processes..... 51

Chapter 1. Unica Campaign and IBM SPSSMA Integration Guide

This guide provides complete solution for creating predictive models, which marketers can then score to predict future customer behavior.

Overview: Integration of Unica Campaign and SPSS Modeler Advantage Enterprise Marketing Management Edition

The integration of Unica Campaign and IBM SPSS Modeler Advantage Enterprise Marketing Management Edition provides a complete solution for creating predictive models, which marketers can then score to predict future customer behavior. Marketers can use modeling and scoring to reach customers who are more likely to accept an offer, which results in better response rates for marketing campaigns.

Unica Campaign

Unica Campaign is a cross-channel marketing product that delivers personalized, relevant marketing messages across all channels. Unica Campaign allows marketers to target individuals with just the right message.

Use Unica Campaign for the following actions:

- Build an ongoing dialog with your customer or prospect through a complete history of offers that are presented, campaign details, and responses.
- Close loops by attributing responses to campaigns by using several attribution methods, including best match, fractional, multiple, and custom.
- Manage the entirety of the campaign logic, including audience segmentation, exclusions, and assignment of offers and channels.
- Enable use, reuse, and tracking of campaign building blocks, including audiences, segments, offers, treatments, and exclusion rules.

Unica Campaign is installed on Unica Platform, which provides authentication, authorization, and single sign-on (SSO).

IBM SPSS Modeler Advantage Enterprise Marketing Management Edition

IBM SPSS Modeler Advantage Enterprise Marketing Management Edition is a predictive analytics platform that combines predictive intelligence to decision making. It provides a range of advanced algorithms and techniques, decision management, and optimization to help marketers select the actions that result in better outcomes.

Use IBM SPSS Modeler Advantage Enterprise Marketing Management Edition to improve decisions and outcomes and to extract value from customer data.

The integrated solution

Unica Campaign communicates with IBM SPSS Modeler Advantage Enterprise Marketing Management Edition in the following ways:

- By internal messaging
- By providing data for model creation
- By retrieving the analytical results when modeling and scoring

Unica Campaign uses these results for campaign strategy decision making.

When IBM SPSS Modeler Advantage Enterprise Marketing Management Edition is integrated with Unica Campaign, the Unica Campaign flowchart palette includes two new process boxes:

- SPSS® Model
- SPSS® Score

How modeling and scoring work in the IBM SPSS Modeler Advantage Enterprise Marketing Management Edition and Unica Campaign integrated environment

When you use Unica Campaign and IBM SPSS Modeler Advantage Enterprise Marketing Management Edition in an integrated environment, you can model and score within your Unica Campaign flowchart.

When you create a model in IBM SPSS Modeler Advantage Enterprise Marketing Management Edition, you generate a modeling stream that you can use in an Unica

Campaign flowchart. The flowchart defines your campaign logic. You can then use one or more models to score your target audience for the campaign. You can access IBM SPSS Modeler Advantage Enterprise Marketing Management Edition directly from an Unica Campaign flowchart, so you can create, edit, and select models while you are designing a marketing campaign. You can also set up flowcharts to automate model updates and batch scoring.

Changes from PredictiveInsight

If you previously used PredictiveInsight, you will no longer be able to use the legacy Model and Score process boxes. After you install Unica Campaign version 9.1.0 or later, the legacy Model and Score process boxes are unconfigured in existing flowcharts.

You must manually re-create the predictive models either by using IBM SPSS Modeler Advantage Enterprise Marketing Management Edition or by using the SPSS® Model process box.



Note: Legacy Model and Score process boxes are inactive and cannot be run. However, they can be viewed for configuration details.

To migrate from PredictiveInsight, you must complete the following tasks:

- Delete instances of the Model process box and replace them with the SPSS® Model process box.
- Delete instances of the Score process box and replace them with the SPSS® Score process box.
- Reconfigure downstream process boxes that use legacy score fields to use the new SPSS® score fields.

These tasks are described in [Converting an existing Unica Campaign flowchart from PredictiveInsight \(on page 35\)](#).

For more information, see the Unica Campaign and IBM SPSS Modeler Advantage Enterprise Marketing Management Edition Integration Guide.

How predictive modeling works in Unica Campaign flowcharts

The SPSS® Model process takes a single input cell for which you specify a target field to indicate what you want to predict.

For example, if you want to predict responders and non-responders, your target field might have ones for responders and zeros for non-responders. Your target field might also contain numeric values, to indicate profitability or revenue, or a categorical variable, for predicting the preferred channel or time of day for contact.

You can create a predictive model in IBM SPSS Modeler Advantage Enterprise Marketing Management Edition to do any of the following tasks:

- Identify who is most likely to respond to an offer.
- Determine the expected value or profitability of an individual who receives an offer.
- Determine the next best action, such as cross-selling a product or service, for the target audience.
- Cluster individuals into similar groups for analysis and targeting.

How and where to create models

You can create new predictive models, either before or during flowchart creation, or use existing modeling streams:

- Create a modeling stream in IBM SPSS Modeler Advantage Enterprise Marketing Management Edition from within an Unica Campaign flowchart.
- Use an existing IBM SPSS Modeler Advantage Enterprise Marketing Management Edition modeling stream within an Unica Campaign flowchart to rebuild the model by using the input data from the flowchart.
- Use a modeling stream that was created with SPSS® Modeler Advantage (non-marketing edition) or with SPSS® Modeler. You must make sure that the modeling stream can be loaded by IBM SPSS Modeler Advantage Enterprise Marketing Management Edition. The prerequisites for using a modeling stream that was created in SPSS® Modeler are described in the "Sharing Streams" topic in the *SPSS® Modeler Advantage Guide*.



Note: For integration with Unica Campaign, the modeling stream must contain the numeric field SPSS_AudID, which is the key field for the modeling stream.

Additional tasks

You can automatically build models on a recurring schedule by using the SPSS® Model process box in an Unica Campaign flowchart. You can then access the modeling stream from the SPSS® Model process box in Unica Campaign to view and edit modeling options. You can evaluate the model and view the SPSS® Model performance reports.

You can also manually open the modeling stream through the IBM SPSS Modeler Advantage Enterprise Marketing Management Edition interface.

How scoring works in Unica Campaign flowcharts

You can use the SPSS® Score process box in an Unica Campaign flowchart to deploy models, such as using modeling streams to score an audience.

For example, you can use a predictive model to rate the likelihood of each customer making a purchase or responding to an offer. By using this method to score the model, you can identify the best customers or prospects for the campaign that you plan to run. You can use up to five models in a single SPSS® Score process box to score the target audience in the campaign, which will use the most recent data available.

Predictive model scores are available downstream from the SPSS® Score process box. You can use the score fields directly to subselect or segment your audience members.

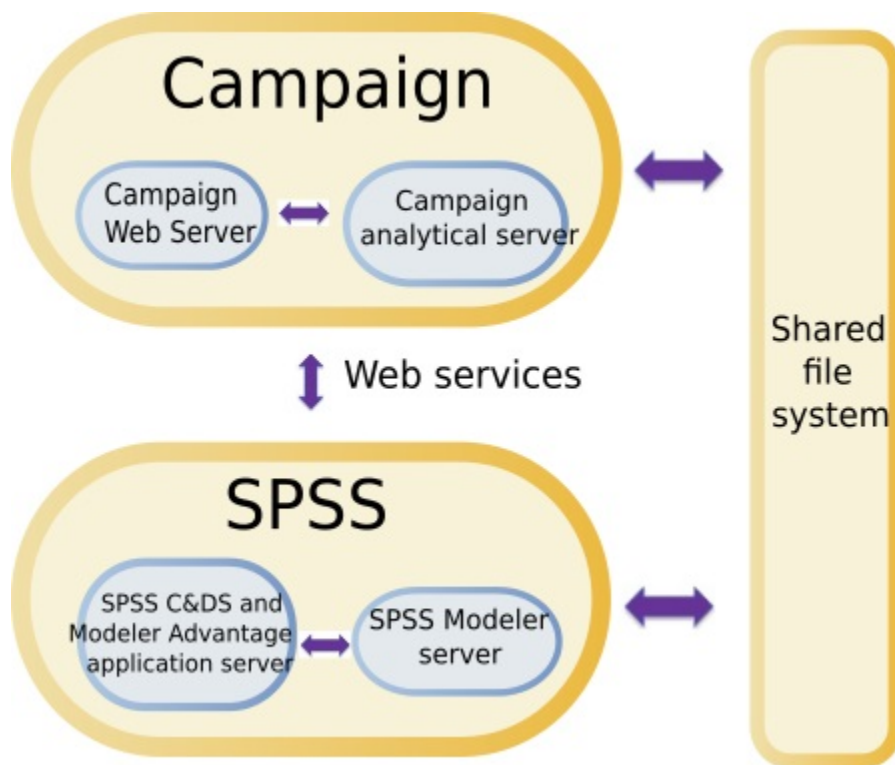
Configuring the integration between Unica Campaign and IBM SPSS Modeler Advantage Enterprise Marketing Management Edition

You must ensure that Unica Campaign and IBM SPSS Modeler Advantage Enterprise Marketing Management Edition are installed and configured for integration.

To integrate Unica Campaign and IBM SPSS Modeler Advantage Enterprise Marketing Management Edition, install or upgrade the following components:

- Unica Platform
- Unica Campaign
- IBM SPSS Modeler Advantage Enterprise Marketing Management Edition




The following image shows the architecture of the Unica Campaign and IBM SPSS Modeler Advantage Enterprise Marketing Management Edition integration. Both products are linked to a shared file system. The Unica Campaign setup includes a web server and an analytical server. The IBM SPSS Modeler Advantage Enterprise Marketing Management Edition setup includes the IBM SPSS Collaboration and Deployment Services and Modeler Advantage application server and the SPSS® Modeler server.



Note: The steps that are described in the following table must be completed only by users with administrative security permissions.

The following table provides an overview of the configuration process.

Table 1. Configuring the integration between Unica Campaign and IBM SPSS Modeler Advantage Enterprise Marketing Management Edition

Task	Details	Documentation
<p>1. Install or upgrade the software.</p>	<p>Use the Unica installer (9.1.0 or later) to install or upgrade the following components to the same version, in the order listed:</p> <ul style="list-style-type: none"> a. Unica Platform b. Unica Campaign c. IBM SPSS Modeler Advantage Enterprise Marketing Management Edition (version 8.0.0 or later) <p> Note about installing: When you install IBM SPSS Modeler Advantage Enterprise Marketing Management Edition, make sure to use the native repository configuration.</p> <p> Note about upgrading: If you are upgrading Unica Campaign, installing IBM SPSS Modeler Advantage Enterprise Marketing Management Edition automatically uninstalls PredictiveInsight and removes PredictiveInsight configuration parameters from Unica Platform.</p>	<p>Installation and upgrades are described in the following documents:</p> <ul style="list-style-type: none"> a. <i>Unica Platform Installation Guide</i> or <i>Unica Platform Upgrade Guide</i> b. <i>Unica Campaign Installation Guide</i> or <i>Unica Campaign Upgrade Guide</i> c. <i>IBM SPSS Modeler Advantage Enterprise Marketing Management Edition Installation Guide</i> <p> Note: Make sure to complete the steps in the installation and configuration chapters before you start the steps in this chapter.</p>

Task	Details	Documentation
<p>2. If IBM SPSS Modeler Advantage Enterprise Marketing Management Edition is deployed in BEA WebLogic, configure the Oracle WebLogic domain.</p>	<p>In Oracle WebLogic, add the following lines to the <code>config.xml</code> file:</p> <pre data-bbox="443 394 1036 730"> <enforce-valid-basic-auth-credentials> false </enforce-valid-basic-auth-credentials> </security-configuration> </pre>	
<p>3. Create shared directories.</p>	<p>A shared directory that is accessible by both Unica Campaign and IBM SPSS Modeler Advantage Enterprise Marketing Management Edition is used to transfer data between the two applications. The shared directory can be on the Campaign server, the SPSS server, or the network file system. Each partition requires its own shared directory.</p> <p>The shared directory that is created in this step is the directory pointed to by the configuration settings in the next step.</p>	<p>This task is typically completed by IT or other technical personnel.</p>
<p>4. Configure single sign-on.</p>	<p>Single sign-on (SSO) allows users to access IBM SPSS Modeler Advantage Enterprise Marketing Management Edition from within the Unica user interface without being prompted to log in.</p>	<p>Information about single sign-on is described in Single sign-on between Unica and IBM SPSS Modeler Advantage Enterprise Market-</p>

Task	Details	Documentation
	Single sign-on is configured on Unica Platform.	ing Management Edition (on page 9) . Additional information about configuring properties is described in Unica Platform Administration Guide.
5. Adjust configuration settings.	You must adjust the configuration settings to specify the IBM SPSS Collaboration and Deployment Services server and the Decision Management server. You must also adjust the configuration settings for each Unica Campaign partition where you want to enable integration with IBM SPSS Modeler Advantage Enterprise Marketing Management Edition.	The configuration properties are described in Configuring properties (on page 17) .

Single sign-on between Unica and IBM SPSS Modeler Advantage Enterprise Marketing Management Edition

You can enable single sign-on to allow users to navigate to IBM SPSS Modeler Advantage Enterprise Marketing Management Edition from within the Unica user interface without being prompted to log in.

After single sign-on is configured, users who are logged in to Unica can navigate to IBM SPSS Modeler Advantage Enterprise Marketing Management Edition by using either of the following options:

- By clicking **Analytics > SPSS** to view the user's Decision Management home page.
- By clicking the links in the SPSS® Model and SPSS® Score process boxes in an Unica Campaign flowchart to view the Model and Score tabs of the modeling stream.

Single sign-on is supported for all authentication methods in IBM SPSS Modeler Advantage Enterprise Marketing Management Edition. Single sign-on is also supported with all of the authentication mechanisms that are supported for Unica:

- Authentication through Unica Platform
- Authentication through supported LDAP servers
- Authentication through supported web-access control platforms

Prerequisites for single sign-on

Your environment must meet the following prerequisites before you implement single sign-on.

- You must have fully functional installations of the following before you can configure single sign-on:
 - Unica Platform version 9.1.0 or later
 - IBM SPSS Modeler Advantage Enterprise Marketing Management Edition version 8.0.0 or later
- Your installation of IBM SPSS Modeler Advantage Enterprise Marketing Management Edition must use the native repository configuration. This configuration is described in the *IBM® SPSS® Modeler Advantage Guide*.

Partition support with single sign-on

You need only a single instance of IBM SPSS Modeler Advantage Enterprise Marketing Management Edition regardless of the number of partitions that you have in your Unica environment. You can configure each partition independently and specify whether users have access to IBM SPSS Modeler Advantage Enterprise Marketing Management Edition. The members of each partition can see and access the modeling streams and data that were created within their own partition only. Each modeling stream that is created in IBM SPSS Modeler Advantage Enterprise Marketing Management Edition is available only in the partition in which it was created.

Logins and roles in IBM SPSS Modeler Advantage Enterprise Marketing Management Edition

Unica Platform defines two user roles for integration: SPSSadmin and SPSSuser. Unica Campaign users who are assigned one of these roles in Unica Campaign have the corresponding permissions in IBM SPSS Modeler Advantage Enterprise Marketing Management Edition. These permissions cannot be changed in Unica Campaign.

You can assign either or both of these roles to an Unica Campaign user. The roles specify the operations that users can perform in the integration. Users with the SPSSadmin role can perform all administrative operations in IBM SPSS Modeler Advantage Enterprise Marketing Management Edition. Users with the SPSSUser role can open IBM SPSS Modeler Advantage Enterprise Marketing Management Edition to build and score models. You assign these roles to users on the **Users** page for the partition.



Note: You can modify permissions for single sign-on users in IBM SPSS Modeler Advantage Enterprise Marketing Management Edition by using IBM SPSS Collaboration and Deployment Services.

How you manage roles and permissions for single sign-on users depends on whether the users have accounts in IBM SPSS Modeler Advantage Enterprise Marketing Management Edition before single sign-on is configured. Typically, users will not have existing logins for IBM SPSS Modeler Advantage Enterprise Marketing Management Edition.

The following table describes the different login situations for users in the integrated environment.


Table 2. Login situations for users in the integrated environment

User login situation	Actions required
No existing login on IBM SPSS Modeler Advantage Enterprise Marketing Management Edi-	<p>Set up new users with logins on Unica Platform with a role of either SPSSuser or SPSSadmin.</p> <p>When users access IBM SPSS Modeler Advantage Enterprise Marketing Management Edition from Unica Platform or from within an Unica Campaign flowchart for the first time, Unica Platform automat-</p>

Table 2. Login situations for users in the integrated environment (continued)

User login situation	Actions required
<p>tion or Unica Campaign</p>	<p>ically creates their logins on IBM SPSS Modeler Advantage Enterprise Marketing Management Edition.</p> <p>The IBM SPSS Modeler Advantage Enterprise Marketing Management Edition logins and passwords are stored in the automatically created SPSS_CRED_DS data source that is defined in the user profiles.</p>
<p>Existing Unica Campaign login, such as asm_admin</p>	<p>In Unica Platform, assign the role of either SPSSuser or SPSSadmin to existing Unica Campaign users.</p> <p>When users access IBM SPSS Modeler Advantage Enterprise Marketing Management Edition from Unica Platform or from within an Unica Campaign flowchart for the first time, Unica Platform automatically creates their logins on IBM SPSS Modeler Advantage Enterprise Marketing Management Edition.</p> <p>The IBM SPSS Modeler Advantage Enterprise Marketing Management Edition user IDs are the same user IDs in Unica Platform and Unica Campaign. The IBM SPSS Modeler Advantage Enterprise Marketing Management Edition logins and passwords are stored in the automatically created SPSS_CRED_DS data source that is defined in the user profiles.</p>
<p>IBM SPSS Modeler Advantage Enterprise Marketing Management Edition login</p>	<p>Set up existing IBM SPSS Modeler Advantage Enterprise Marketing Management Edition users with new logins on Unica Platform.</p> <p>To associate the IBM SPSS Modeler Advantage Enterprise Marketing Management Edition user IDs with the Unica Platform user IDs, manually create the SPSS_CRED_DS credentials, which reference the IBM SPSS Modeler Advantage Enterprise Marketing Management Edition user IDs.</p>

Table 2. Login situations for users in the integrated environment (continued)

User login situation	Actions required
	<p>The steps for manually creating credentials are described in Setting up users with specific roles (on page 16).</p> <p> Note: Users maintain their existing IBM SPSS Modeler Advantage Enterprise Marketing Management Edition roles.</p>

Setting up single sign-on between Unica and IBM SPSS Modeler Advantage Enterprise Marketing Management Edition

To set up single sign-on in the integrated environment, complete the following tasks in the order listed.



Note: Each of the following steps is a separate task.

1. [Setting up a system user and defining a data source \(on page 13\)](#)
2. Optional: [Setting up user groups \(on page 15\)](#)
3. [Setting up users with specific roles \(on page 16\)](#)
4. [Configuring properties \(on page 17\)](#)

Setting up a system user and defining a data source


Select or create an Unica system user and configure a data source for this user.

A system user is the user account that Unica uses to communicate with IBM SPSS Modeler Advantage Enterprise Marketing Management Edition. This account is associated with a corresponding IBM SPSS Modeler Advantage Enterprise Marketing Management Edition system user that is used to build and score models in IBM SPSS Modeler Advantage Enterprise Marketing Management Edition.

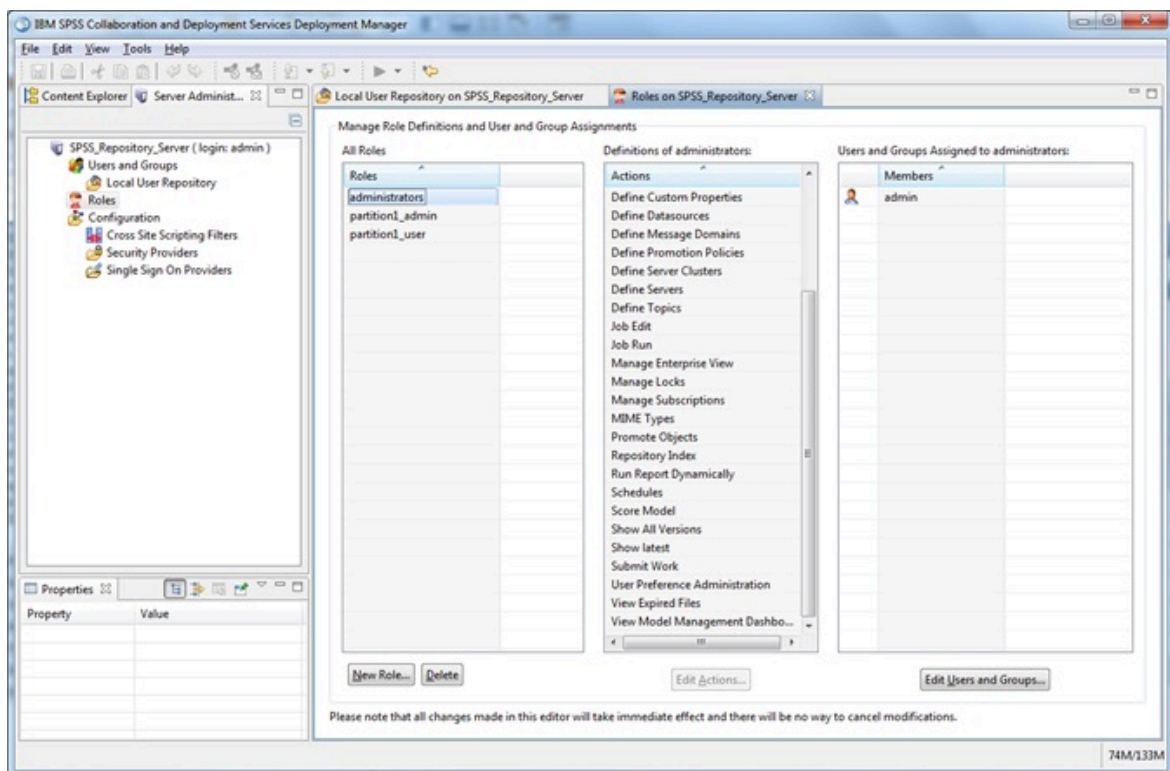
To set up a system user and define a data source, complete the following steps.

1. In IBM SPSS Modeler Advantage Enterprise Marketing Management Edition, create or identify a user account that has permissions to build and score models.

Note the user name and password for this IBM SPSS Modeler Advantage Enterprise Marketing Management Edition account. You will need this information later.

 **Tip:** The default account is the one that you set up during installation: **admin/<yourpassword>**. You can use that account or add others. You can also use the **platform_admin** user account. Because this user is a member of all partitions, the data source is available in all partitions.

2. Use the Deployment Manager to connect the built-in **admin** account to the **asm_admin** account in Unica Platform.



3. In Unica Platform, create or identify an account to configure as the system user. Give the system user the SPSSAdmin role in Unica Platform, either by making the user a member of a group with this role or by assigning the role individually.



Note: You can use the `platform_admin` user account. Because this user is a member of all partitions, the data source is available in all partitions.

4. In Unica Platform, on the **System User Detail** page, select **Edit Data Sources > New**.
5. Complete the fields as follows.
 - **Data Source:** Type any name. It is convenient to use `SPSS_MA_ADMIN_DS` because this is the default value of the `SPSS | Integration | SPSSCredentialDatasource` property. The value of this property must be the name of this data source.
 - **Data Source Login:** Type the system user's IBM SPSS Modeler Advantage Enterprise Marketing Management Edition login name.
 - **Data Source Password:** Type the system user's IBM SPSS Modeler Advantage Enterprise Marketing Management Edition password.
6. Configure the datasource `SPSS_CRED_DS` under `asm_admin`. Use the login credentials for the system administrator (`asm_admin`). This datasource is used for creating SPSS user credentials "on the fly".
7. Save your changes.

Setting up user groups

You might want to create two groups to correspond to the SPSSadmin and SPSSuser roles. Alternatively, if you have only a few users, you can assign roles individually without creating groups.



Note: If you have multiple partitions, you must complete this task in every partition where users require single sign-on.

To set up user groups, complete the following steps.

1. Log in to Unica as an Admin user and navigate to the **Settings > User Groups** page.
2. Create or identify one or more groups of IBM SPSS Modeler Advantage Enterprise Marketing Management Edition single sign-on users.

3. Assign the appropriate role or roles to your group or groups.
4. Save your changes.

Setting up users with specific roles

You must set up users in the integration and either assign them to a group or assign them a role. If necessary, you can manually create data source credentials and change passwords for users.

Unica uses the SPSS_CRED_DS data source to log in users to IBM SPSS Modeler Advantage Enterprise Marketing Management Edition. For users who have an existing account, the system automatically creates a login and SPSS_CRED_DS data source the first time that they use single sign-on to access IBM SPSS Modeler Advantage Enterprise Marketing Management Edition. You might need to manually create data sources for users who have existing IBM SPSS Modeler Advantage Enterprise Marketing Management Edition accounts.

Both users and administrators can change the password in the user's data source. If users with existing logins change their passwords in IBM SPSS Modeler Advantage Enterprise Marketing Management Edition, they must also change their Unica Platform password to match. Otherwise, the login attempt will fail with an authentication error.

If you set a new password in the user's data source in Unica Platform, the user's IBM SPSS Modeler Advantage Enterprise Marketing Management Edition credentials are reset to the password you specify.



Note: If you have multiple partitions, you must complete this task in every partition where you have users who require single sign-on.

To set up users with specific roles, complete the following steps.

1. Navigate to the **Settings > Users** page.
2. Create or identify Unica user accounts for users who require single sign-on access to IBM SPSS Modeler Advantage Enterprise Marketing Management Edition.

3. For users with existing IBM SPSS Modeler Advantage Enterprise Marketing Management Edition accounts, create a data source for each user by completing the following steps:
 - a. On each user's detail page, click **Edit Data Sources > Add New**.
 - b. Complete the fields.
 - **Data Source:** Type **SPSS_CRED_DS**, which is the required name of the data source for every user.
 - **Data Source Login:** Type the user's IBM SPSS Modeler Advantage Enterprise Marketing Management Edition login name.
 - **Data Source Password:** Type the user's IBM SPSS Modeler Advantage Enterprise Marketing Management Edition password.
4. To assign a user role to single sign-on users, complete one of the following steps:
 - Make each user a member of one of the groups that you created for single sign-on.
 - For each user, assign SPSSuser or SPSSadmin roles.
5. Save your changes.

Configuring properties

You must configure properties for single sign-on, navigation, and integration to complete the integration of IBM SPSS Modeler Advantage Enterprise Marketing Management Edition with Unica Campaign.

To complete the integration, you must set the following properties:

- Single sign-on:
 - **SPSS | integration:** Properties in this category are used to configure Platform for single sign-on with IBM SPSS Modeler Advantage Marketing Edition.
 - **SPSS | integration | partitions | partition[n]:** The property in this category is used to configure Platform for single sign-on with IBM SPSS Modeler Advantage Marketing Edition.
- Navigation:

- **SPSS | navigation:** Properties in this category affect IBM SPSS Modeler Advantage Marketing Edition integration with Unica Campaign. These properties define the location of the Decision Management server and the IBM SPSS Collaboration and Deployment Services server.
- Integration:
 - **Campaign | partitions | partition[n]:** Properties in this category affect IBM SPSS Modeler Advantage Marketing Edition integration for the specified partition in Unica Campaign.

Properties in the Integration node specify the name of the Unica Platform account in which the data source is configured to store credentials for single sign-on users. For each partition that you want to be used in the integration, configure the single sign-on properties. Data for each partition is distinct and separate from every other partition. The view, operations, and data of a user of a particular partition is available to that partition only. For example, a user from partition 1 cannot view, modify, or use the data for partition 2.

The default partition in Unica Platform is named **partition1**. Only a single installation of IBM SPSS Modeler Advantage Enterprise Marketing Management Edition is required even when integrated with a Unica Platform installation that has multiple partitions.



Note: Partitions cannot be deleted. However, the integration for a partition can be disabled.

Navigation properties for SPSS® configuration specify the URL for the SPSS® Decision Management server and the server and port for the IBM SPSS Collaboration and Deployment Services server. In most cases, the IBM SPSS Collaboration and Deployment Services server and port are specified in the URL for the SPSS® Decision Management server.

You must also adjust the configuration settings for each Unica Campaign partition where you want to enable integration with IBM SPSS Modeler Advantage Enterprise Marketing Management Edition.



Note: More information about configuration properties is in the *Unica Platform Administrator's Guide*.

To configure the properties, complete the following steps.

1. In Unica Platform, navigate to **Settings > Configuration**.
2. Set the **SPSS | Integration** properties:
 - a. For **Platform user for IBM SPSS account**, enter the login name for the IBM SPSS Modeler Advantage Enterprise Marketing Management Edition account that you created or identified in [Setting up a system user and defining a data source \(on page 13\)](#).
 - b. For **Datasource for IBM SPSS account**, enter the name of the data source you created for the system user in [Setting up a system user and defining a data source \(on page 13\)](#). If you used **SPSS_MA_ADMIN_DS** as the data source name, you can retain the default value of this property.
 - c. The **Is this score only integration** is not supported. Leave this value as **False**.
3. Set the **SPSS | Integration | partitions | partition[n]** property:
 - a. Set **Enable IBM SPSS** to **TRUE**.



Note: For each partition that has single sign-on users, you must use **SPSS | Integration | partitions | partitionTemplate** to create the **enableSPSS** configuration property. The name of the category that you create with the template must exactly match the name of the corresponding Unica Campaign partition. The default partition1 already has the **enableSPSS** configuration property, so you do not have to use the template to create it.

4. Set the **SPSS | Navigation** properties to define the appropriate URLs:

- a. For **IBM SPSS Decision Management Server URL**, configure this URL with the server name or server IP address followed by the port on which SPSS is hosted on the server. Do not change the **/DM**.
 - b. For **C&DS Server**, enter the name of the SPSS Collaboration and Deployment Services server.
 - c. For **C&DS Port**, enter the port where the SPSS Collaboration and Deployment Services server is located.
5. For each Unica Campaign partition where you want to enable integration, set the **Campaign | partitions | partition[n] | server | spss** properties:
- a. For **SharedDirectoryPathCampaign**, enter the path that you set up to the directory that is used to transfer data between Unica Campaign and IBM SPSS Modeler Server, as seen from Unica Campaign.
 - b. For **SharedDirectoryPathSPSS**, enter the path to the directory that is used to transfer data between Unica Campaign and IBM SPSS Modeler Server, as seen from IBM SPSS Modeler Server. This is the same shared directory referenced by **SharedDirectoryPathCampaign** but is the local directory path used by IBM SPSS Modeler Server.

For example, Unica Campaign might be installed on a Windows server with **SharedDirectoryPathCampaign = Z:\SPSS_Shared**, where **Z:\SPSS_Shared** is a mapped network drive. At the same time, IBM SPSS Modeler Server is installed on a UNIX server with a mount to that directory defined as **SharedDirectoryPathSPSS = /share/CampaignFiles**.
 - c. For **C&DS_URL**, enter the URL for the IBM SPSS Collaboration and Deployment Services repository.
 - d. For **SPSS_Integration_Type**, select **SPSS MA Marketing Edition**.

Restart the server and test that the integration was successful by selecting **Analytics > SPSS** in either Unica Platform or Unica Campaign.

Disabling or re-enabling Unica Campaign and IBM SPSS Modeler Advantage Enterprise Marketing Management Edition integration

Although it is possible to disable integration of Unica Campaign and IBM SPSS Modeler Advantage Enterprise Marketing Management Edition, it is best to avoid this action if possible. The disabling and re-enabling tasks can only be performed by users with administrative security permissions.

Disabling the integration

If you disable the integration, you can no longer navigate to IBM SPSS Modeler Advantage Enterprise Marketing Management Edition from within Unica. The SPSS® Model and SPSS® Score process boxes will no longer appear in the flowchart palette in Unica Campaign. Although the SPSS® Model and SPSS® Score process boxes continue to appear in any existing flowcharts, they will generate errors when you attempt to open the process boxes or run the flowcharts.

To disable the integration, navigate to the **Settings > Configuration** page and set the **SPSS | Integration | partitions | partition[n] | Enable IBM SPSS** property to false.

Re-enabling the integration

If you have not uninstalled the IBM SPSS Modeler Advantage Enterprise Marketing Management Edition product, you can re-enable the integration by navigating to the **Settings > Configuration** page and setting the **SPSS | Integration | partitions | partition[n] | Enable IBM SPSS** property to true.

Building and scoring models

After Unica Campaign and IBM SPSS Modeler Advantage Enterprise Marketing Management Edition are integrated, you can use the SPSS® Model and SPSS® Score process boxes within an Unica Campaign flowchart. Use the SPSS® Model and SPSS® Score process boxes to open IBM SPSS Modeler Advantage Enterprise Marketing Management Edition to view and configure the modeling and scoring options.



Note: The SPSS® Model and SPSS® Score process boxes appear in the Unica Campaign flowchart palette only if IBM SPSS Modeler Advantage Enterprise Marketing Management Edition integration is enabled.


This process overview describes how to use the SPSS® Model and SPSS® Score process boxes within an Unica Campaign flowchart. Additional information is described in the following documents:

- Flowcharts, sessions, and campaigns are described in detail in the *Unica Campaign User's Guide*.
- Modeling and scoring are described in detail in the *SPSS® Modeler Advantage Guide*.

The following table provides an overview of how to build and score a model in Unica Campaign and IBM SPSS Modeler Advantage Enterprise Marketing Management Edition.

Table 3. Building and scoring models process overview

Task	Description	Documentation
1. Use Unica Campaign to design your flowchart.	For example, start with a Select process box. Add an SPSS® Model process box downstream and connect the upstream process to provide input.	This task is described in Creating or rebuilding a model (on page 39) .
2. Configure the SPSS® Model process box.	<ul style="list-style-type: none"> a. Create a predictive model or use an existing modeling stream. b. Select the target fields and candidate fields to consider while modeling. c. Save your changes and close the SPSS® Model process box. 	This task is described in Creating or rebuilding a model (on page 39) .

Task	Description	Documentation
3. Save and run the flow-chart.	Make sure that the model builds successfully.	This task is described in Creating or rebuilding a model (on page 39) .
4. Evaluate the model.	You can generate model performance reports to evaluate the model's predictive accuracy.	This task is described in Evaluating the model (on page 42) .
5. Add an SPSS® Score process box downstream of the SPSS® Model process box.	<p>To ensure that the scoring process runs only after modeling is complete, add a temporal connection between the SPSS® Model process box and the SPSS® Score process box.</p> <p> Note: A solid line connects the process box whose output cell is used by the Select process. A dotted line connects the process box whose output is not used as input but has only a temporal relationship with the Select process.</p>	This task is described in Scoring using a modeling stream (on page 45) .
6. Configure the SPSS® Score process box.	You can select up to five modeling streams to use for scoring.	This task is described in Scoring using a modeling stream (on page 45) .
7. Ensure that the variables that are required by	Verify that all fields are matched. For any fields that are not automatically	This task is described in Scoring using a

Task	Description	Documentation
each model are properly matched.	matched, select each model and click Match Variables .	modeling stream (on page 45) .
8. Optional: Automate the flowchart to run periodically.	You can either use the Schedule process in your flowchart or configure the Unica Scheduler.	This task is described in Scoring using a modeling stream (on page 45) . See the <i>Unica Campaign User's Guide</i> for information about the Scheduler.
9. Save and run the flowchart.		This task is described in Scoring using a modeling stream (on page 45) .
10. Troubleshoot any errors.		This task is described in Troubleshooting model and score processes (on page 50) .

Flowchart of a periodic scoring process

In the following example, the flowchart starts with a Schedule process that runs the flowchart every month. It is connected to a Select process that generates a list of customer IDs from your marketing data. The IDs are then sent to an SPSS® Score process for scoring against a model. Finally, the results of the SPSS® Score process are sent to a Snapshot process to be written to a database table for use by marketing campaigns.



About single sign-on

Single sign-on allows users to access IBM SPSS Modeler Advantage Enterprise Marketing Management Edition from Unica Platform or from an Unica Campaign flowchart. To use single sign-on, you must have a login and password on Unica Platform with a role of either SPSSuser or SPSSadmin.

System administrators set up users in both IBM SPSS Modeler Advantage Enterprise Marketing Management Edition and Unica Campaign through Unica Platform. For users who already have logins on IBM SPSS Modeler Advantage Enterprise Marketing Management Edition, their passwords are reset during this setup process. System administrators can provide users with their new passwords. Users can then change their IBM SPSS Modeler Advantage Enterprise Marketing Management Edition passwords by editing their SPSS_CRED_DS credentials in their Unica Platform user profiles.

Users do not need their IBM SPSS Modeler Advantage Enterprise Marketing Management Edition passwords if they are accessing IBM SPSS Modeler Advantage Enterprise Marketing Management Edition only through Unica Platform or Unica Campaign.



Note: You might share an IBM SPSS Modeler Advantage Enterprise Marketing Management Edition login with other Unica Campaign users. Talk to your administrator to understand how users were set up in your integration.

Accessing IBM SPSS Modeler Advantage Enterprise Marketing Management Edition

You can access IBM SPSS Modeler Advantage Enterprise Marketing Management Edition in the following ways:

- In Unica Platform, select **Analytics > SPSS** to open an IBM SPSS Modeler Advantage Enterprise Marketing Management Edition window. If you do not see this option, talk to your administrator.
- In Unica Campaign, create a flowchart and add an SPSS® Model or SPSS® Score process box. Double-click the box and click **Open Modeler Advantage Session** to open an IBM SPSS Modeler Advantage Enterprise Marketing Management Edition window.

Logging out and re-entering IBM SPSS Modeler Advantage Enterprise Marketing Management Edition

You must log out of the IBM SPSS Modeler Advantage Enterprise Marketing Management Edition browser window. Do not exit by closing the browser window. You are still logged in to Unica Campaign.

After you log out of the IBM SPSS Modeler Advantage Enterprise Marketing Management Edition window, the message `Application exited` is displayed with a **Re-enter** button.

To re-enter IBM SPSS Modeler Advantage Enterprise Marketing Management Edition, click **Re-enter** and type your IBM SPSS Modeler Advantage Enterprise Marketing Management Edition user ID and password to display the Decision Management home page. If you do not know your IBM SPSS Modeler Advantage Enterprise Marketing Management Edition login ID, you can reenter IBM SPSS Modeler Advantage Enterprise Marketing Management Edition from the Unica suite.

Changing roles

If your role on Unica Platform changes between user and admin, your permissions in IBM SPSS Modeler Advantage Enterprise Marketing Management Edition are not affected.

If your role in IBM SPSS Modeler Advantage Enterprise Marketing Management Edition changes, your administrator needs to do one of the following tasks:

- Modify the permissions that you have within IBM SPSS Modeler Advantage Enterprise Marketing Management Edition through IBM SPSS Collaboration and Deployment Services.
- Create a new IBM SPSS Modeler Advantage Enterprise Marketing Management Edition login and password for you. Your administrator also needs to disable or change the password on your previous IBM SPSS Modeler Advantage Enterprise Marketing Management Edition account to prevent it from being used.

Changing your password on Unica Platform

Users can change their integration passwords in Unica Platform in their SPSS_CRED_DS data source.

You must know the password for your IBM SPSS Modeler Advantage Enterprise Marketing Management Edition login. If you do not know this password, ask your administrator to reset your password.

To change your integration password, complete the following steps.

1. Log in to Unica Platform.
2. Navigate to **Settings > User**.
3. In the left pane, click your user name.
4. In the right pane, click **Edit Data Sources**.
5. For the SPSS_CRED_DS data source, type your new password in the **Data Source Password** field and in the **Confirm Password** field.
6. Click **Save Changes**.

Model types

IBM SPSS Modeler Advantage Enterprise Marketing Management Edition supports four model types. However, Predictive models are the only type of model that you can create when you use the SPSS® Model process in an Unica Campaign flowchart. Although Unica Campaign restricts which types of models can be created in the SPSS® Model process box, any of the four model types can be used for scoring in the SPSS® Score process box.

The following table describes the four model types.

Table 4. IBM SPSS Modeler Advantage Enterprise Marketing Management Edition model types

Model type	Description	Restrictions
Predictive	<p>Build a model to predict a chosen target of interest.</p> <p>For example, turn a loss into a profit by targeting the best available customers for your next campaign.</p>	<p>Default model type that you create from an SPSS® Model process box. The Target field must contain the text or numeric values for the model to predict.</p>
Predictive Rule	<p>Interactively build a model that identifies segments that show a higher or lower likelihood relative to a specific outcome.</p> <p>Use a predictive rule model to create rules to segment customer data. You can use the rule-finder function to automatically find segments with high or low concentrations of the TRUE value for your chosen target field. For example, look for customers who gave a positive response to your campaign, and then identify segments with a higher probability of responding.</p>	<p>Cannot be created or used in an SPSS® Model process box but can be used in an SPSS® Score process box. To build a Predictive Rule model, you must create and build the modeling stream from the IBM SPSS Modeler Advantage Enterprise Marketing Management Edition user interface.</p> <p>Supports only categorical targets.</p>
Clustering	<p>Build a model that categorizes records into groups with similar characteristics.</p> <p>For example, you can segment customers based on demograph-</p>	<p>To build a Clustering model, you must start IBM SPSS Modeler Advantage Enterprise Marketing Management Edition from the SPSS® Model process box. Then, change the model type to Cluster-</p>

Table 4. IBM SPSS Modeler Advantage Enterprise Marketing Management Edition model types (continued)

Model type	Description	Restrictions
	ic characteristics or purchasing behavior.	ing and save the modeling stream. The specified Target field from the SPSS® Model process box is used as the Evaluation field. The Evaluation field and other clustering options are described in the <i>SPSS® Modeler Advantage Guide</i> .
Association	Build a model that predicts which items are most likely to appear together and predicts the strength of the relationship between them. For example, identify the next most likely purchase for a customer based on the items in the current basket.	To build an Association model, you must start IBM SPSS Modeler Advantage Enterprise Marketing Management Edition from the SPSS® Model process box. Then, change the model type to Association and save the modeling stream. The Target field from the SPSS® Model process box must specify the field that contains the content. The Content field and other association options are described in the <i>SPSS® Modeler Advantage Guide</i> .

Predictive Rule models

The Predictive Rule model type is not supported in the SPSS® Model process box in an Unica Campaign flowchart. If you open IBM SPSS Modeler Advantage Enterprise Marketing Management Edition from an Unica Campaign SPSS® Model process box, you cannot create Predictive Rule models or change from another model type to a Predictive Rule model.

If you change the model type of the modeling stream to Predictive Rule, the SPSS® Model process box displays an error and will not configure. However, you can manually run

Predictive Rule models through the IBM SPSS Modeler Advantage Enterprise Marketing Management Edition interface and build them interactively.

Predictive rule models can be selected for scoring in SPSS® Score process boxes.

Automatic matching of fields

When you use an existing modeling stream, the fields are automatically matched when you configure SPSS® Model and SPSS® Score process boxes. The automatic matching process finds the first occurrence of an exact field name from mapped tables and matches it to the required field from the modeling stream.

Both the SPSS® Model and SPSS® Score process boxes perform automatic field matching of cell fields to modeling stream fields. This can cause issues where a field is not matched because Unica Campaign and IBM SPSS Modeler Advantage Enterprise Marketing Management Edition use different mechanisms to interpret field types.

For example:

In Unica Campaign, a cell field that contains numbers within strings, such as `1512` and `100`, is of type string. In IBM SPSS Modeler Advantage Enterprise Marketing Management Edition, that data is determined to be numeric. In such cases auto-match fails and you must match fields manually in the SPSS® Model or SPSS® Score process box.

The following sections describe the situations in which modeling stream fields are automatically matched.

Run a flowchart

Modeling stream fields are automatically matched when you run a flowchart in which the modeling stream contains unmatched fields. Fields might not be matched in a configured SPSS® Model or SPSS® Score process box if you changed the modeling stream after you saved the configuration in the SPSS® Model process box. For example, if you add candidate fields in an SPSS® Score process box, these fields are unmatched in the modeling stream.

- If the model is rebuilt, new fields that are not matched in the SPSS® Model process box are automatically matched.
- If the model is scored, new fields that are not matched in the SPSS® Score process box are automatically matched.

The flowchart run succeeds if matching is successful. If matching is not successful, the run fails and you must manually match fields before the process can be rerun.

If you did not change any fields, then the fields are not automatically matched. This action prevents any matches that you provided from being overwritten.

In the following example, you configured the SPSS® Score process box to match variables between the Unica Campaign flowchart and the modeling stream. So A matches A, B1 (which you manually overwrote) matches B, and C matches C.

Field from Unica Campaign flowchart	Variable that is required by modeling stream
A	A
B1 For this field, you manually overwrote the automatic match.	B
C	C

If the modeling stream is changed and now requires variables A, B, and D, your previous matches are preserved and only the new variable D is automatically matched. So A still matches A, B1 still matches B, and the new variable D matches D.

Field from Unica Campaign flowchart	Variable that is required by modeling stream
A	A
B1	B
D	D

Field from Unica Campaign flowchart	Variable that is required by modeling stream
The field D is automatically matched at run time.	

Open SPSS® Model or SPSS® Score process box in flowchart edit mode

Modeling stream fields are automatically matched when you select a modeling stream in the SPSS® Model process with the **Use existing modeling stream** option.

When you open an SPSS® Model or SPSS® Score process box, Unica Campaign retrieves metadata about the configured modeling streams from IBM SPSS Modeler Advantage Enterprise Marketing Management Edition:

- For any mismatches of the modeling stream fields, a warning is displayed.
- Any matches that you set up on the existing modeling stream fields are retained.
- Any deleted fields are deleted from the mapping.
- For new fields, you can use the **Match** button to automatically match fields or use the **Add** button to manually match fields.

Modify fields in an SPSS® Modeler Advantage session

Modeling stream fields are automatically matched when you select a modeling stream in the SPSS® Score process box.

When you modify modeling stream fields in SPSS® Modeler Advantage, Unica Campaign does not have information about the session or any changes you made there.

- When you click **OK** in the SPSS® Model or SPSS® Score process configuration dialog, the existing configuration in the process box is saved. However, Unica Campaign does not get the latest modeling stream metadata. If required fields changed from the last time the configuration window was opened, click **OK**. Then, reopen the process box to update those fields for the modeling stream.
- When you open the SPSS® Model or SPSS® Score process box, Unica Campaign retrieves the latest modeling stream configuration. Any changed fields are

automatically matched, as described in "Open SPSS® Model or SPSS® Score process box in flowchart edit mode".

- When you run the SPSS® Model or SPSS® Score process box, Unica Campaign retrieves the latest modeling stream configuration. Fields are automatically matched, as described in "Run a flowchart".

Prerequisites for building and scoring models

Make sure that the prerequisites are met before you build and score models in Unica Campaign.

Modeling streams

In IBM SPSS Modeler Advantage Enterprise Marketing Management Edition, modeling configuration and metadata are stored in proprietary stream files, which are called modeling streams.

When you configure a new SPSS® Model process box in an Unica Campaign flowchart, you can create a new modeling stream or use an existing modeling stream.

For the SPSS® Score process, you can use existing modeling streams that were created in IBM SPSS Modeler Advantage Enterprise Marketing Management Edition.

Modeling streams must meet the following requirements:

- The modeling stream includes `SPSS_AudID` as a numeric key field. This field is created automatically for any modeling stream that is created through an SPSS® Model process box. If you are manually creating a modeling stream, you need to ensure that your data source contains a numeric `SPSS_AudID` field that uniquely identifies each individual in the data set. For scoring, the `SPSS_AudID` key field must be selected as scoring output.
- The modeling stream uses a single data source node.
- The deployment metadata indicates which branch is the Model Refresh branch.
- The selected modeling node is either an automated modeling node or a Decision List node.
- A Type node is present to define the target field.

You can download modeling streams by accessing the IBM SPSS Collaboration and Deployment Services repository. The download process is described in the IBM SPSS Collaboration and Deployment Services User's Guide.

Data fields

Unica Campaign passes user data fields to IBM SPSS Modeler Advantage Enterprise Marketing Management Edition through .csv data files. These data files are written to a shared folder for modeling and scoring.

The data can contain numeric, text, and date fields. However, IBM SPSS Modeler Advantage Enterprise Marketing Management Edition understands date fields in numeric form only. If your modeling data includes dates, you must convert them to numeric values before that data is passed to IBM SPSS Modeler Advantage Enterprise Marketing Management Edition. You can use the system-defined `Date ()` macro in Unica Campaign to convert dates into Julian format.

Dummy data files

If you create a modeling stream in the SPSS® Model process box, Unica Campaign generates dummy data according to the types for the candidate fields that are specified in the SPSS® Model process box. The dummy data file is stored in the common shared folder and is used to create a stream. The purpose of the dummy file is to pass field names and data types to IBM SPSS Modeler Advantage Enterprise Marketing Management Edition so that IBM SPSS Modeler Advantage Enterprise Marketing Management Edition can understand the field types in the modeling stream.

If you open the modeling stream in IBM SPSS Modeler Advantage Enterprise Marketing Management Edition before you run the SPSS® Model or SPSS® Score process box, only dummy data is available for the SPSS® Score process box. You must run the processes that provide the input cell and run the SPSS® Model process to see real data in any of the IBM SPSS Modeler Advantage Enterprise Marketing Management Edition data overviews or previews.

The dummy file cannot be used to build the modeling stream. Actual data for modeling is passed only when the SPSS® Model process box is run in the Unica Campaign flowchart.

Test runs

Test runs do not require that predecessor process boxes have run successfully, but the runs might not generate meaningful results. For test mode, only partial user data is provided to test flowchart function. Other than that, a test run of the SPSS® Model or SPSS® Score process box is the same as a production run. Both types of runs rebuild the model that is based on the latest data from Unica Campaign.

Converting an existing Unica Campaign flowchart from PredictiveInsight

For Unica Campaign flowcharts that used PredictiveInsight for modeling or scoring, you must manually replace the legacy Model and Score process boxes.



Note: Flowcharts with legacy Model and Score process boxes will not run. You must replace the legacy process boxes with the SPSS® Model and SPSS® Score process boxes.

To convert an Unica Campaign flowchart from PredictiveInsight to IBM SPSS Modeler Advantage Enterprise Marketing Management Edition, complete the following steps.

1. In Unica Campaign, open the flowchart.
2. Open any legacy Model and Score process boxes and record any information that you want to use in the new process boxes.
3. Delete the legacy Model process boxes and add SPSS® Model process boxes to the flowchart.

This task is described in [Creating or rebuilding a model \(on page 39\)](#).

4. Delete the legacy Score process boxes and add SPSS® Score process boxes to the flowchart.

This task is described in [Scoring using a modeling stream \(on page 45\)](#).

5. Test the flowchart to verify that your changes create the output that you want.

Selecting modeling stream versions other than LATEST

There might be multiple versions of a modeling stream saved in the IBM SPSS Collaboration and Deployment Services repository. When you select a modeling stream from the repository, you always get the version labeled `LATEST`.

IBM SPSS Modeler Advantage Enterprise Marketing Management Edition automatically applies the label `LATEST` to the last saved version of a modeling stream.

To use a version of the modeling stream other than `LATEST`, complete the following steps.

1. Open the version that you want in IBM SPSS Modeler Advantage Enterprise Marketing Management Edition.



Note: You can expand the list to see the available versions and to select one of the versions.

2. Select **Save as** to copy the model to a new modeling stream. This version is then labeled `LATEST`.
3. In the SPSS® Model or SPSS® Score process box, click **Use an existing modeling stream** and select the new modeling stream.

The SPSS® Model process

Unica Campaign runs the SPSS® Model process box as part of a flowchart. You can run the flowchart manually by using the flowchart controls, or you can automate the flow by using a Schedule process box in the flowchart. The model is built with current data that is extracted from the Unica Campaign flowchart.

The SPSS® Model process box must be properly configured and must point to a modeling stream in the IBM SPSS Collaboration and Deployment Services repository. Process boxes that supply input to the SPSS® Model process box must have run successfully for data to be properly generated for a production run.

Deleting an SPSS® Model process box does not delete any modeling streams it has created. Unica Campaign deletes files that are created on the shared file system upon deletion of the SPSS® Model process box from the flowchart. To remove modeling streams,

delete them in IBM SPSS Modeler Advantage Enterprise Marketing Management Edition through IBM SPSS Collaboration and Deployment Services.

The following steps describe the SPSS® Model process:

1. When the SPSS® Model process box is run, Unica Campaign creates a data file by using the selected fields for the input cell.
2. Unica Campaign calls IBM SPSS Modeler Advantage Enterprise Marketing Management Edition to build a model that uses the modeling stream in the IBM SPSS Collaboration and Deployment Services repository and the data file created in step 1. The input file overrides any data source that is configured in the modeling stream. If you build the model manually through the IBM SPSS Modeler Advantage Enterprise Marketing Management Edition interface, whatever data source is configured in the modeling stream is used to build the model.
3. IBM SPSS Modeler Advantage Enterprise Marketing Management Edition builds the model and saves a file that is labeled `LATEST` in the IBM SPSS Collaboration and Deployment Services repository.

If the model is rebuilt because input data source variables were added or deleted, modeling configuration is preserved. If the configuration is valid, the model is built and saved in the repository as the latest version. If the configuration is not valid, an error is displayed, such as `missing target variable`.

4. If IBM SPSS Modeler Advantage Enterprise Marketing Management Edition returns a success message, the SPSS® Model process box displays a green check.

If IBM SPSS Modeler Advantage Enterprise Marketing Management Edition returns a failure message, the SPSS® Model process box displays a red X.

5. The data source is updated to point to the Unica Campaign data that was used to build the model. The modeling stream in the repository is updated and contains a freshly built model.

Best practices for creating or rebuilding a model

Use best practices when you create or rebuild models in Unica Campaign.

The following table describes best practices to use when you create or build SPSS® models in Unica Campaign.

<p>Flowchart types</p>	<p>Create session flowcharts when the model will be shared among multiple campaign flowcharts.</p> <p>Create campaign flowcharts when the resulting modeling stream will be used only by that one campaign.</p>
<p>Model names</p>	<p>Model names must be alphanumeric. Names must begin with an alphabetic character and cannot contain any spaces. They can include the underscore (_) character.</p>
<p>Changing model types</p>	<p>You can change the model type in a modeling stream from the default Predictive type by opening IBM SPSS Modeler Advantage Enterprise Marketing Management Edition from the SPSS® Model process box. Change the model type and save the modeling stream. You can then build the model either from the SPSS® Model process box or directly from IBM SPSS Modeler Advantage Enterprise Marketing Management Edition.</p>
<p>Data for modeling and scoring</p>	<p>If you open the modeling stream in IBM SPSS Modeler Advantage Enterprise Marketing Management Edition before you run the SPSS® Model or SPSS® Score process, only dummy data is available for the SPSS® Score process. You must run the processes that provide the input cell and run the SPSS® Model process to use real data in the IBM SPSS Modeler Advantage Enterprise Marketing Management Edition data overviews or previews.</p>
<p>Displaying the latest results</p>	<p>If you open a modeling stream while it is running, the display does not report that the model is building or that it completed. You must close and re-open a modeling stream to see the latest results.</p>

Saving modeling streams	Modeling streams cannot be saved in the root directory, which is at the parent level. They must be saved in folders, which are at the child level.
-------------------------	----------------------------------------------------------------------------------------------------------------------------------------------------

Creating or rebuilding a model


Add an SPSS® Model process box to an Unica Campaign flowchart to create a new modeling stream or use an existing modeling stream to rebuild or refresh a model. You can then view and configure the model build options in IBM SPSS Modeler Advantage Enterprise Marketing Management Edition. These settings are used when the model is built during an Unica Campaign automated process flow.

If you are using an existing modeling stream, it must be a compatible .str file that can be loaded into IBM SPSS Modeler Advantage Enterprise Marketing Management Edition. The prerequisites for using a modeling stream that is created in IBM SPSS Modeler Advantage Enterprise Marketing Management Edition are described in the "Sharing Streams" topic in the SPSS® Modeler Advantage Guide. In addition, the modeling stream must contain a numeric key field named `SPSS_AudID`.

Complete the following steps to configure a model process.

1. In Unica Campaign, open a flowchart in Edit mode.
2. Drag process boxes from the palette to the flowchart workspace. Connect them as you normally would to select a set of audience members.
For example, use the Select, Segment, and Merge process boxes.
3. Drag the SPSS® Model process box from the palette to your flowchart workspace.
4. Connect a process to the SPSS® Model process box.
The output of the process that is upstream of the SPSS® Model process provides input to the SPSS® Model process.
If you connect a Select process box to the SPSS® Model process box, the Select process provides the set of audience members to use for building the model.
5. Double-click the SPSS® Model process box in the flowchart workspace.
The **SPSS Model Process Configuration** dialog opens.
6. Select the input data source, which is the input cell.

7. Select whether to create a modeling stream or to rebuild a model in an existing modeling stream.

Option	Description
<p style="text-align: center;">Create new modeling stream</p>	<p>Create a modeling stream.</p> <p> Note: The stream name must be unique. By default, the modeling stream name is based on a concatenation of the campaign name, the campaign code, the flowchart name, and the SPSS® Model process name. You can change the name to any unique value, but it is useful to retain a traceable link to the process box that created this modeling stream. If a stream with that name exists, a warning is displayed.</p>
<p style="text-align: center;">Use an existing modeling stream</p>	<p>Click Browse to select a modeling stream. In the Open Model File window, the default is to choose a modeling stream from the IBM SPSS Collaboration and Deployment Services repository.</p> <p>Click Upload Local File to select a modeling stream from your local hard drive.</p>

8. Depending on the model type, select what you are trying to predict in the **Target** field.

- For a Predictive model, use the **Target** field.
 - For an Association model, use the **Content** field.
 - For a Clustering model, use the **Clustering Evaluation** field.
9. Specify the variables to be considered for modeling.
- When you build a model, you can select any of the Candidate fields, which are based on the table mappings that are available in the flowchart.
 - When you use an existing stream, the **Stream Field** column is automatically populated. The **Match, Up,** and **Down** buttons are not displayed if the Stream Fields are not populated.
10. Optional: To change the default model build options, click **Open Modeler Advantage Session**.

IBM SPSS Modeler Advantage Enterprise Marketing Management Edition opens in a new window. The Modeling tab is displayed. The modeling stream might be partially or completely configured and ready to build a model, but a model has not been built yet.

The SPSS® Model process box is now configured to use an existing modeling stream, which is the stream that was just created. Unica Campaign passes the default target variable and the audience ID and key, and creates a dummy input data file to build the model.

- a. Select the modeling type.

Make sure the default Predictive model type is selected.

- b. Optional: On the Modeling tab, select the values for this model process.

- Model-specific settings: such as the percentage of data to use for the training set versus the test set
- Build settings: enabling or disabling automatic data clean up



Note: Make sure the numeric key field `SPSS_AudID` is included.

- c. Optional: Click the **Data** tab and view the data configuration.

If you are creating a modeling stream from the SPSS® Model process box, the Data tab is configured with data from the flowchart. If you are using an existing modeling stream, the Data tab is configured with data from the modeling stream. You can change data sources and use any features, such as creating new variables. Any data source changes are in effect only for the current session; they are overwritten on any run of the SPSS® Model process.

d. Optional: Click **Build Model** after you configure the settings.

You can build the model only if data is available on the SPSS® Modeler server, such as if the SPSS® Model process box was previously run.

e. Save your changes and exit IBM SPSS Modeler Advantage Enterprise Marketing Management Edition to return to the **SPSS Model Process Configuration** dialog.

The modeling stream was saved in the IBM SPSS Collaboration and Deployment Services repository.

11. Click **OK** to save and close the **SPSS Model Process Configuration** dialog.

Unica Campaign verifies whether the settings are valid and a model is ready to be built.

- If the settings are valid, the SPSS® Model process box displays the status `configured`.
- If the settings are not valid, the SPSS® Model process box displays the status `unconfigured` with an appropriate error message.

Evaluating the model

You can generate model performance reports to evaluate the model's predictive accuracy after the model is built.

Either build the model manually from the IBM SPSS Modeler Advantage Enterprise Marketing Management Edition user interface or run the SPSS® Model process with production data. Then, verify that the modeling stream contains a successfully built model.

Use the **Evaluate** option to generate charts, such as analysis of modeling data and model details, that are available after a successful model build.

To generate evaluation graphs and charts for the model, complete the following steps.

1. Select the model to evaluate from the following options:

- In your Unica Campaign flowchart, double-click the SPSS® Model process box to open the **SPSS Model Process Configuration** dialog. The SPSS® Model process box must display a green check.
- Click **Open Modeler Advantage Session** to launch IBM SPSS Modeler Advantage Enterprise Marketing Management Edition in a new window. The **Model** tab is displayed for the modeling stream that is associated with the SPSS® Model process.

The version number of the built model should match the version number that is expected from Unica Campaign when it last ran the SPSS® Model process. If the version number does not match, Unica Campaign displays a warning that the model in the stream might not be the model last built through Unica Campaign.

- In SPSS® Modeler Advantage, click **Open** and select a modeling stream that contains a built model.

2. Click **Evaluate** to generate charts for the model.



Note: If you change any model settings, you can rebuild the model from the SPSS® Modeler Advantage session or by running the process flow in the Unica Campaign flowchart.

3. Review the evaluation charts.

4. Close the reporting window when you are done.

5. Exit IBM SPSS Modeler Advantage Enterprise Marketing Management Edition.

The SPSS® Score process

Unica Campaign runs the SPSS® Score process box as part of a flowchart. The individuals to be scored and their data come from the source cell that is defined in the SPSS® Score process box.

The SPSS® Score process box must be properly configured and point to at least one modeling stream in the IBM SPSS Collaboration and Deployment Services repository.

The SPSS® Score process can score using up to five different models run against the same input cell. You might use multiple models to compare response likelihood against different offers, one model for each offer. For example, score one model to generate the likelihood of response and score another model to predict the magnitude of the purchase amount.

If you delete an SPSS® Score process box, Unica Campaign cleans up any associated files from the shared folder and from the `partition/<partition n>/tmp` folder.

File length errors

If you frequently see the message `Delimited file length exceeds allowable maximum length` when you run the SPSS® Score process box, you can increase the value of the configuration parameter.

1. In Unica Campaign configuration, navigate to `Affinium|Campaign|partitions|partition1|server|internal`.
2. Change **numRowsReadToParseDelimitedFile** to a number higher than the default value of 100.

The value depends on the total number of records to be processed in the SPSS® Score process box. For any value for this configuration property, half of the records are processed from the top of the score output file, which is received from IBM SPSS Modeler Advantage Enterprise Marketing Management Edition. The remaining half of the records are processed from the bottom of the file to determine maximum field width for all fields.

If you set this configuration parameter to a high value, you can process more records to help ensure accurate identification of the maximum field width for all fields.

If you set this configuration parameter to 0, the entire file is scanned to accurately determine the field width of all fields. This action resolves the error but increases the SPSS® Score process run time if the file size is large.

The following steps describe the SPSS® Score process:

1. When the SPSS® Score process is run, Unica Campaign specifies the following information:
 - The modeling stream in the IBM SPSS Collaboration and Deployment Services repository
 - The input and output file paths for the data to be scored
 - The scoring results, such as from a Snapshot process box
2. Unica Campaign creates an input file for the audience members to be scored. The file contains the fields or variables that are required by the models.
3. The SPSS® Score process runs. The results are stored in a file in a shared directory on the server. Unica Campaign automatically retrieves and makes scored fields available to downstream process boxes as persistent derived fields.
4. The downstream processes can use the output scores to further subselect or segment the data or to take a snapshot of the score values.



Note: If the score outputs that are used by the downstream processes are not available from the SPSS® Score process, the downstream processes fail. This failure might happen, for example, if the score configuration was changed in the modeling stream and different outputs were defined.

Scoring using a modeling stream

In an Unica Campaign flowchart, open an SPSS® Score process box to configure the score settings. These settings are used when the audience members are scored during an Unica Campaign automated process flow.

You can modify the scoring options in an existing modeling stream. For example, you might want to take a snapshot of the values that were used to generate the score, such as the account balance at the time the score was derived. These fields might be used for personalization, such as sending the message "Thank you for your recent deposit of \$500."



Note: The configuration property **Campaign | partitions | partition[n] | server | internal | numRowsReadToParseDelimitedFile** is used by the Score process box when importing a score output file from IBM SPSS Modeler Advantage Enterprise Marketing Management Edition. This property determines how many line entries to examine in order to determine data types and field lengths. For more information, see the *Unica Campaign Administrator's Guide*.

To score using a modeling stream, complete the following steps.

1. In Unica Campaign, open a flowchart in Edit mode.
2. Drag process boxes from the palette to the flowchart workspace. Connect them as you normally would to select a set of audience members.
For example, use the Select, Segment, and Merge process boxes.
3. Drag the SPSS® Score process box from the palette to your flowchart workspace.
4. Connect the process box that contains the audience members to be scored to the SPSS® Score process box.



Note: If any of the modeling streams in the SPSS® Score process are created in the same flowchart, connect those SPSS® Model process boxes to the SPSS® Score process box. Create temporal connections to ensure that scoring does not occur until the model is refreshed. You cannot use the temporal connection if the model has not already been built. To create the temporal connection, drag one of the arrow corners of the SPSS® Model process box to the SPSS® Score process box.

5. Double-click the SPSS® Score process box in the flowchart workspace.

The **SPSS Score Process Configuration** dialog opens.

6. Select the source cell that contains the audience members to score.

7. Select the number of models to use for scoring.
8. Configure each model by completing the following steps:
 - a. Select the modeling stream either by browsing to a file in the repository or by uploading a modeling stream from your local hard disk drive. After you select a valid modeling stream, the scoring outputs are displayed in the **Score Field Name** column.



Note: You cannot configure the SPSS® Score process if the model is not already built.

- b. Optional: In the Parameter For column, change the default model name to a more user-friendly name. The downstream scoring outputs are identified by this model name.

For example, you can name the output fields `$XS-Response` and `$XSC-Response` for the output score and associated confidence value. The model name is `FreeShippingOffer`. The scoring outputs available downstream from the SPSS® Score process are named `FreeShippingOffer.$XS-Response`, for the free shipping model score, and `FreeShippingOffer.$XSC-Response`, for the associated confidence value.

- c. Optional: Select a modeling stream row and click **Match Variable Names** to verify and match any incorrectly matched fields.



Note: By default, variables are automatically matched by name. Verify that the matches are correct and manually fix any incorrect matches. Auto-matching is described in [Automatic matching of fields \(on page 30\)](#).

d. Optional: Click **Open Modeler Advantage Session** to configure the scoring options.

IBM SPSS Modeler Advantage Enterprise Marketing Management Edition opens in a new window. You can change the default scoring outputs (or any other scoring options) and save the modeling stream.

9. Click **OK** and close the **SPSS Score Process Configuration** dialog.

If Unica Campaign detects that the SPSS® Score process is not completely configured, the SPSS® Score process box displays the status `unconfigured` with an error message.

10. Optional: Automate the flowchart to run periodically. You can either use the Schedule process in your flowchart or configure the Unica Scheduler. The Scheduler is described in the *Unica Campaign User's Guide*.

11. Save the flowchart.

You can now perform a test run on the flowchart to verify that it returns the results you expect.

Automating the building and scoring of models

You can automate the building and scoring of models by using the Schedule process box in Unica Campaign flowcharts or by using the Unica Scheduler. The Scheduler operates only on the full flowchart.

You can implement the automated building and scoring of models in two separate flowcharts that run with different frequencies. For example, you might want the scoring to be done weekly, while the model is rebuilt monthly.

If both of the building and scoring processes are in the same flowchart, make sure that modeling is complete and successful before the scoring starts. You can create a temporal connection between the SPSS® Model process and the SPSS® Score process, which is shown as a dotted line in the flowchart.



Note: The following task is one example of how the flowchart can be configured.

You might use a Select process box to select the audience or use a Sample or



Segment process box to choose a portion of the audience with which to build the model.

To automate the building and scoring of models, complete the following steps.

1. In Unica Campaign, open a flowchart in Edit mode.
2. To automate the building of models, drag the following process boxes from the palette to your flowchart workspace and connect them in the following order:
 - a. Schedule: Connect to all top-level process boxes that must start when flowchart run begins.
 - b. Select, and other process boxes as needed
 - c. SPSS® Model
3. To automate batch scoring, drag the following process boxes from the palette to your flowchart workspace and connect them in the following order:
 - a. Schedule: Connect to all top-level process boxes that must start when flowchart run begins.
 - b. Select, and other process boxes as needed
 - c. SPSS® Score
 - d. Snapshot: The Snapshot process writes the scores to a database table or flat file for use by other flowcharts and processes.
4. To create a single flowchart that automates building and scoring, drag the following process boxes from the palette to your workspace and connect them in the following order:



Note: Connect the Schedule process box to all top-level process boxes that must start when flowchart run begins.

- a. Schedule to Select
- b. Select to SPSS® Model
- c. Select to SPSS® Score

Add a temporal connection from the SPSS® Model process box to the SPSS® Score process box.



Note: If the model is not built, you cannot select the model stream in the SPSS® Score process box.

d. SPSS® Score to Snapshot

The Snapshot process writes the scores to a database table.



Note: Items a and b comprise one branch and items c and d comprise another branch in a single flowchart.

5. Configure the process boxes.
6. Save the flowchart.
7. Test the processes in the flowchart.

Troubleshooting model and score processes

Determine the cause of failure and correct the settings so that the model can be rebuilt before being scored.

When a flowchart run fails, Unica Campaign displays the error status and error messages. If an SPSS® Model or SPSS® Score process box fails during a run, it displays a red X. Depending on the error, you might need to correct the problem in the flowchart process box or in the modeling stream. Other problems might require changing configuration parameters.

To troubleshoot problems with the model or score process, complete the following steps.

1. In your Unica Campaign flowchart, roll your cursor over the process box with the red X to view the error.



Note: This information is also captured in the flowchart logs. In Unica Campaign, make sure the log level is set to **ALL**.

2. Open the **SPSS Model Process Configuration** or **SPSS Score Process Configuration** dialog.

3. If you determine that the problem is in the modeling stream, click **Open Modeler Advantage Session**.



Note: In the SPSS® Score process box, you can open multiple sessions, one for each modeling stream. Each modeling stream opens in its own window.

The Model tab is displayed for the modeling stream that is associated with the SPSS® Model process. The Score tab is displayed for the modeling stream that is associated with the SPSS® Score process. The Data tab is displayed if no model was built. Depending on the problem, an error might be displayed unless the model or scoring is rerun in the SPSS® Modeler Advantage session.

- a. Review and change the settings as appropriate for the error.
 - b. Click **Build Model** or **Score**. You can also click **Evaluate** or **Test**.
 - c. Save the modeling stream.
4. Close the process configuration dialog and return to the Unica Campaign flowchart.

Unica Campaign detects if the modeling stream is ready to run and displays the SPSS® Model or SPSS® Score process box as `configured` or `unconfigured`.

Example of a campaign that uses SPSS® Model and SPSS® Score processes

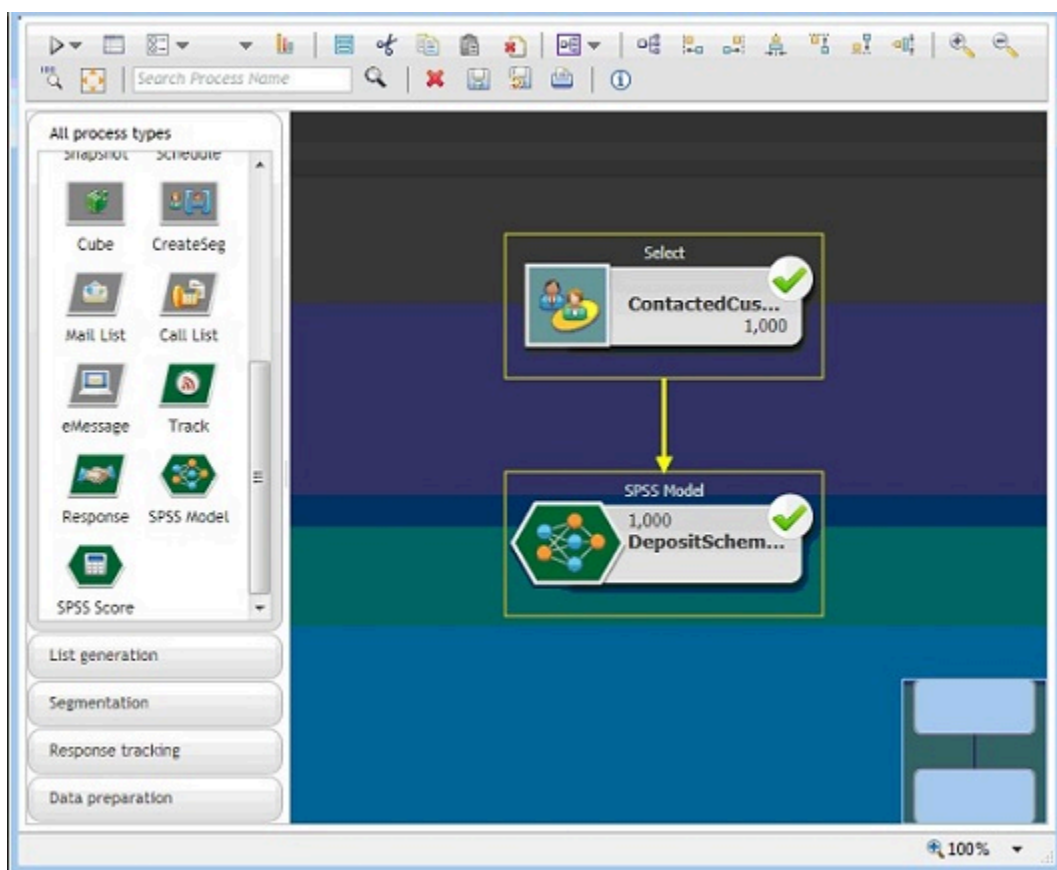
Marketers at ABC Bank want to promote savings accounts to customers by providing special high-interest rates. They ran a marketing campaign that targeted 1000 customers. The results of the campaign were poor as few customers accepted the offer. Now, the marketers want to target an additional 1000 customers. To get better results from the campaign, they want to analyze the responses from the previous campaign to find customers who have a higher probability of accepting the offer.

Run a marketing campaign to promote a new savings account

The campaign designer can create this campaign by completing the following steps:

1. In Unica Campaign, open a flowchart in Edit mode to create a model that analyzes data from previous responses.
2. Drag a Select process box to the flowchart workspace. Configure it to select all customer data and pass it to the SPSS® Model process box.
3. Drag an SPSS® Model process box to the flowchart workspace. Configure it to use account type, account balance, average yearly account balance, last transaction amount, and salary to create the model.

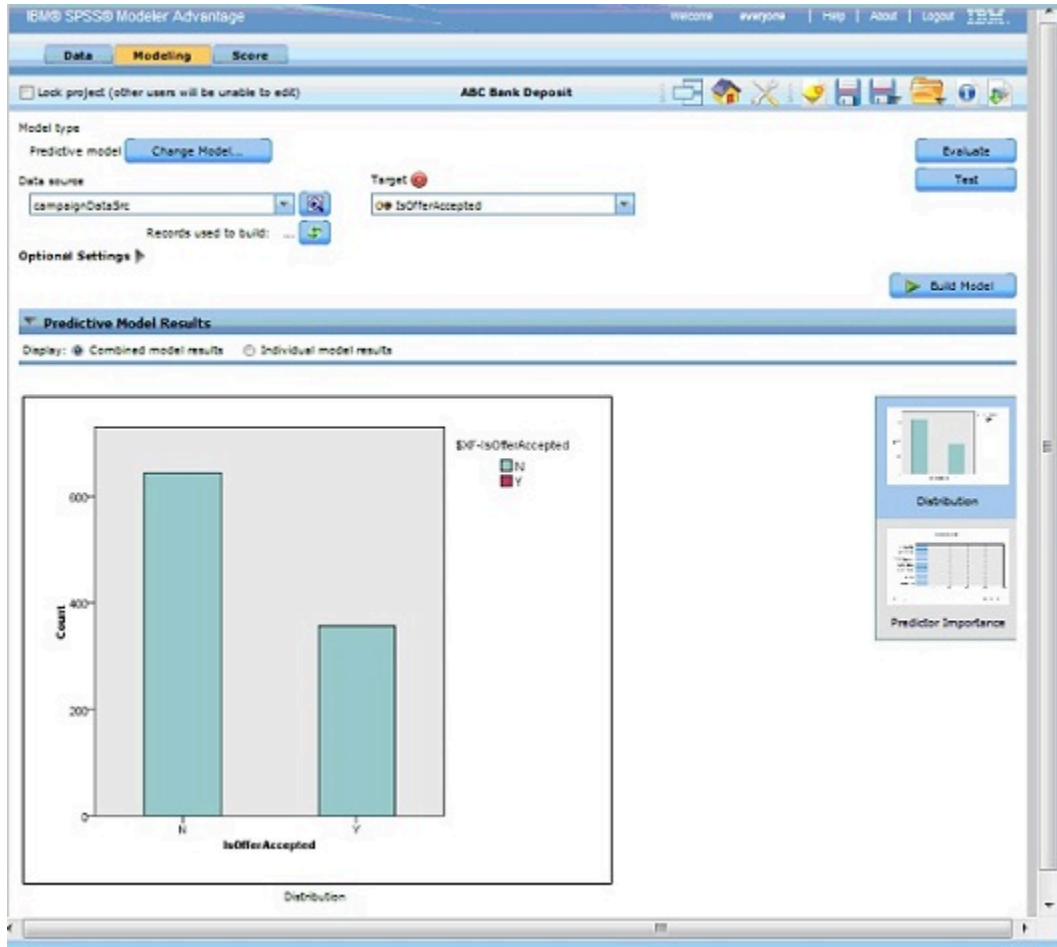
The following example shows the modeling flowchart details.



4. Run the flowchart.

The predictive model is created by IBM SPSS Modeler Advantage Enterprise Marketing Management Edition and is based on the data that is provided by Unica Campaign. This model helps the marketer to predict the behavior of other customers.

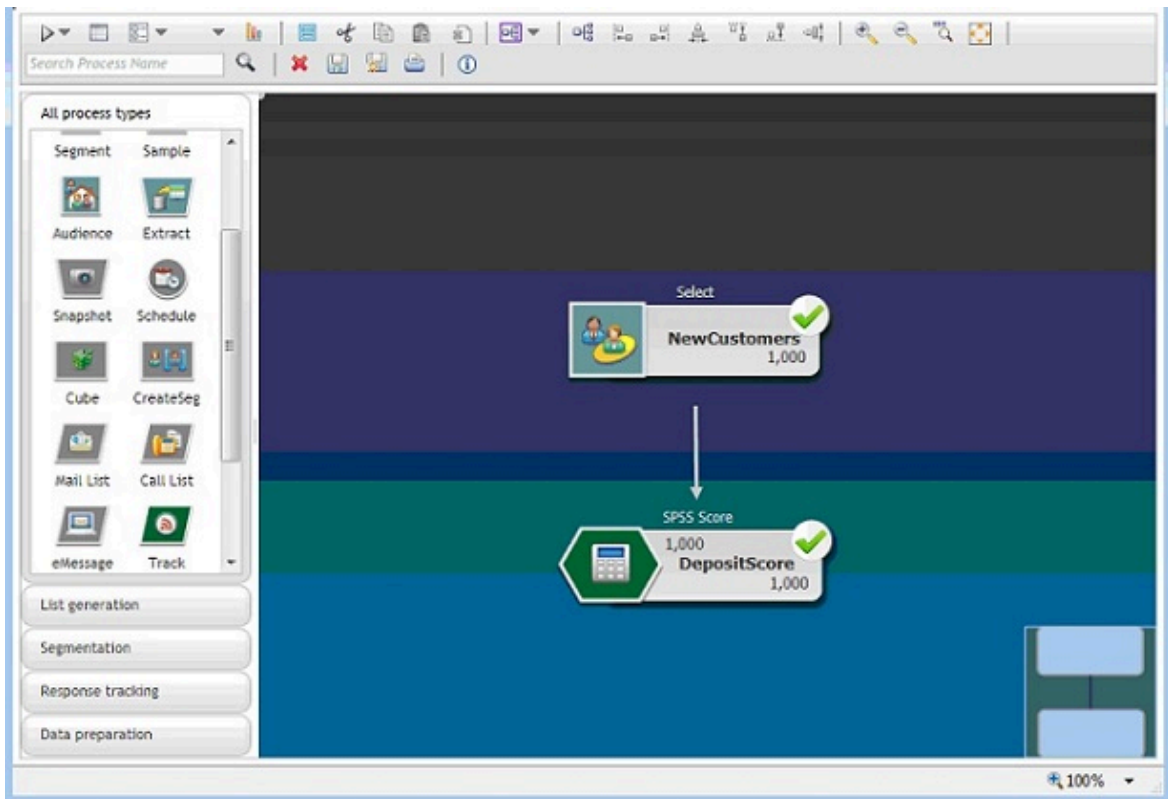
The following example shows the created model in IBM SPSS Modeler Advantage Enterprise Marketing Management Edition.



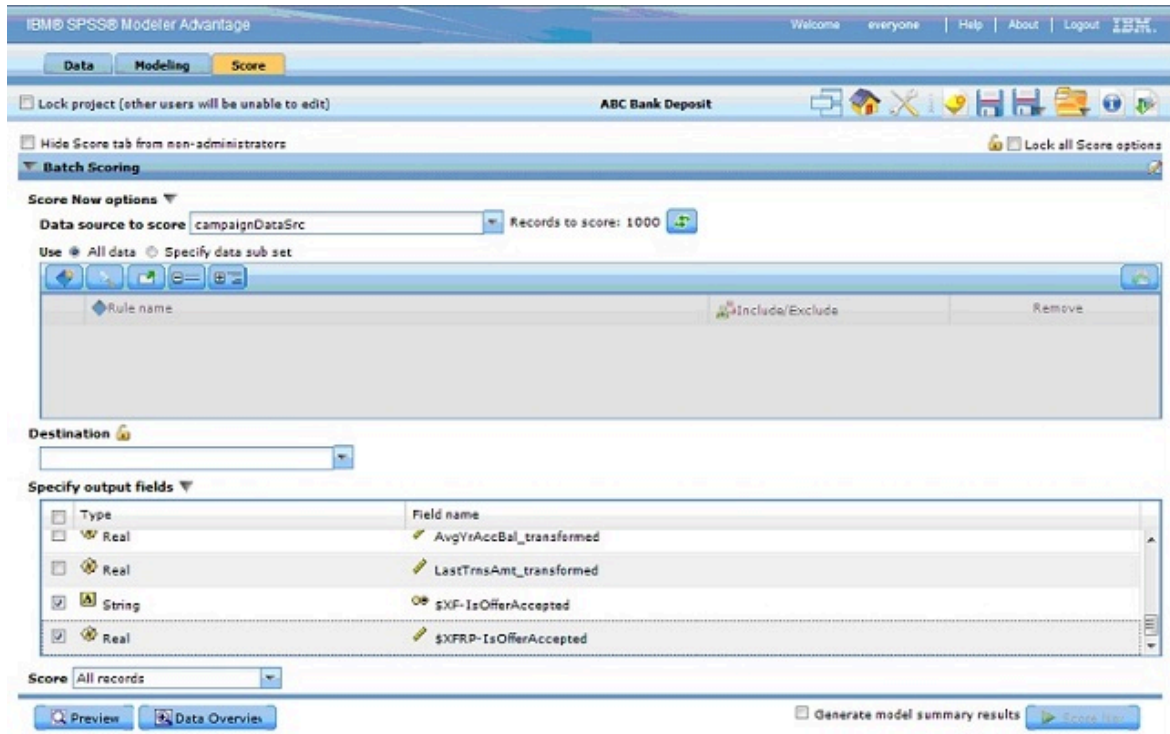
When the Model is ready in IBM SPSS Modeler Advantage Enterprise Marketing Management Edition, it can be used for predicting the behavior of customers. ABC Bank has a list of 1000 customers that comprise the potential target audience for the new campaign.

5. In Unica Campaign, open a flowchart in Edit mode in which the customer data is sent to IBM SPSS Modeler Advantage Enterprise Marketing Management Edition for scoring based on the previously created model. Configure the SPSS® Score process box to select the newly created model for scoring.

The following example shows the scoring flowchart details.



In the following example, the IBM SPSS Modeler Advantage Enterprise Marketing Management Edition **Score** tab shows the output field and data source details.



6. Score the data in IBM SPSS Modeler Advantage Enterprise Marketing Management Edition, and the scoring results are provided to Unica Campaign.
7. In the Unica Campaign flowchart, use marketing logic to optimize the list based on the score that is received for each customer.

The marketing offer will be assigned and delivered to the targeted list of customers using various channels.

